

# OUR CABIN LIFT FOR PUBLIC & COMMERCIAL BUILDINGS

Aritco PublicLift Cabin  
Product catalogue  
2020



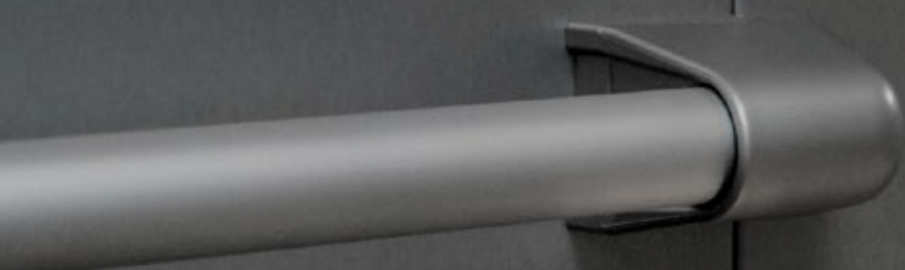
## Aritco public & commercial lifts - accessibility lifts for all needs.

Our journey started 1995, with the simple idea of improving mobility everywhere. Today, Aritco lifts can be found in over 35,000 buildings and private homes around the world.

Simplicity, quality and innovation are the hallmarks of all Aritco's activities. We are constantly seeking new ways to improve the

quality, design and user-friendliness of our products, as well as our environmental impact.

Safety and reliability are top priorities, and we follow Europe's strictest quality and safety standards.



# This catalogue is primarily made for all our partners.

The purpose is to show what Aritco can offer with the Artico PublicLift Cabin and its options and possible combinations.

Due to continuous product development, all specifications included in this catalogue are subject to change without prior notice. Reservations are made regarding misprints and items being out of stock.

## Content

Product summary.....	4
Lift sizes.....	6
Lift colour .....	8
Cabin.....	10
Destination panel.....	12
Floor.....	13
Doors.....	14
Door control.....	15
Lift walls.....	16
Communication .....	17
Drive system.....	18
European standards and safety .....	19
Recommended sales arguments .....	21



# PRODUCT SUMMARY

## Aritco PublicLift Cabin - our cabin lift for public & commercial buildings

The lift is designed to meet all requirements for quality, safety and service life. It is a perfect fit for tough and demanding environments such as schools, shops and residential buildings.

<b>Technical compliance:</b>	European Machine directive 2006/42/EC
<b>Lift type:</b>	Platform lift intended for use in public & commercial environment.
<b>Drive system:</b>	Traction device with lifting belts and pulleys
<b>Rated speed (max):</b>	0,15 m/s
<b>Travel height:</b>	350 -14 600 mm
<b>Number of stops:</b>	Max. 5 stops per lift
<b>Number of doors:</b>	Max. 6 doors per lift
<b>Number of doors per floor:</b>	Max. 2 doors per floor
<b>Pit:</b>	120-140 mm below floor (no pit is required when there is a ramp)
<b>Entry:</b>	One or two sides
<b>Top height:</b>	Minimum 2600 mm
<b>Platform control:</b>	Press one time to operate the lift
<b>Landing control (on door):</b>	One-touch call
<b>Environment:</b>	Indoor/outdoor
<b>Emergency lowering:</b>	Battery operated emergency lowering
<b>Control voltage:</b>	24V
<b>Motor:</b>	3 kW
<b>Power supply:</b>	1-phase 230V 50 Hz/9 A/16 A slow
<b>Rated load:</b>	400 kg <sup>1)</sup>



1) Standard capacity is 400 kg. When using cabin glass doors lift capacity will decrease with 50 kg per glass door. I.e. lift capacity with one glass door is 350 kg and lift capacity with two cabin doors is 300 kg.

# Aritco PublicLift Cabin

Doors  
page 16

Lift walls  
page 24

Lift colour  
page 10

Carrier  
page 12



# LIFT SIZE

Aritco PublicLift Cabin is available in standard configuration 1140 x 1400 mm and 1000 x 1240 mm plus customization possibilities.

**Cabin size:** Inner dimensions of the lift.

Aritco PublicLift Cabin follows the requirements stated for lifts regarding the possibility to fit a wheelchair with or without attendant. National guidelines may apply.

Depending on the size of the platform you can fit either a wheelchair or a wheelchair with an attendant.

Type A and B wheelchairs are defined in :

- EN 12183 Manual wheelchairs - requirements and test methods
- EN 12184 Electrically powered wheelchairs, scooters and their charges - Requirements and test methods

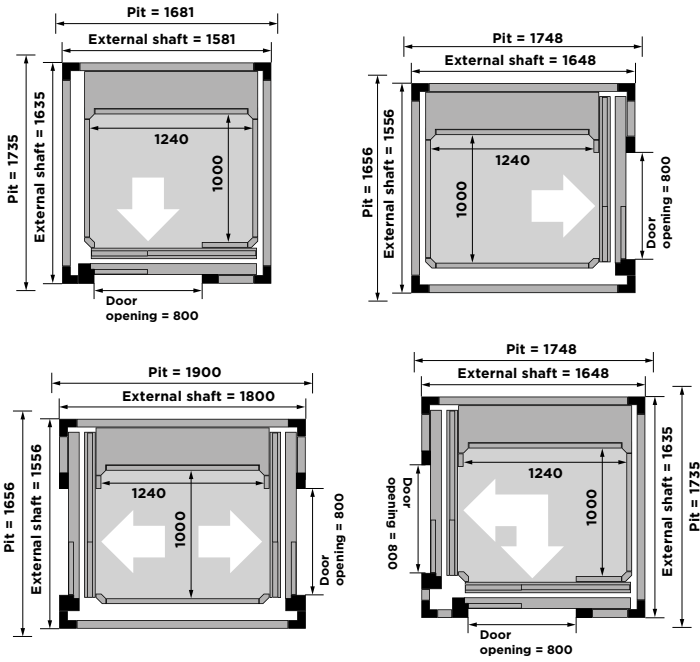
Dimensions of wheelchair	Class A	Class B
Total length	1200	1400
Total width	700	700

EN81-41 and EN81-70 defines the sizes of the platform and what type of wheelchair it is intended for.

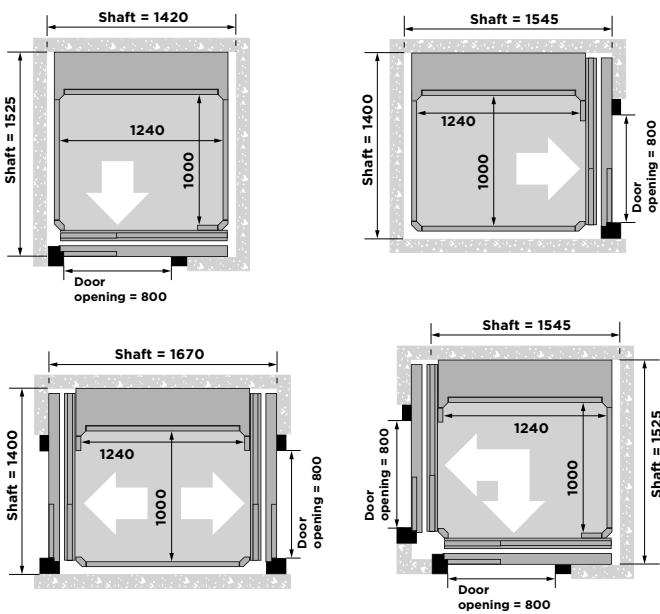
## CABIN ENTRANCE

### 1000 x 1240

Self supporting structure with telescopic doors. <sup>1)</sup>



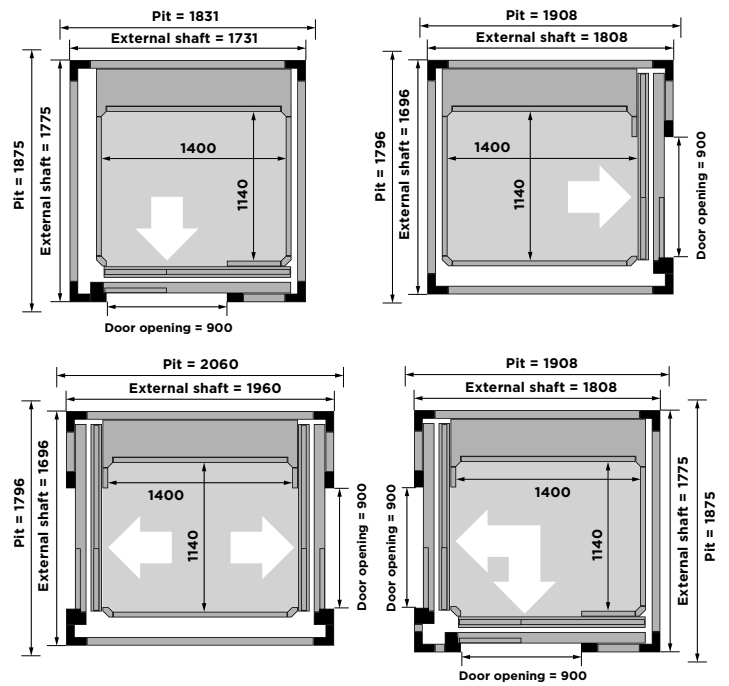
Masonry shaft with telescopic doors. <sup>1)</sup>



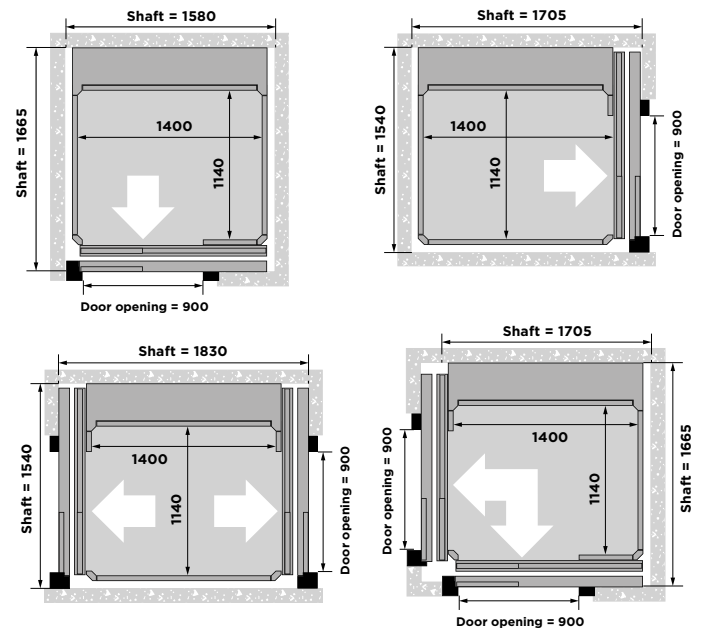
**Cabin size:** 1000 x 1240 mm  
**Rated load:** 400 kg  
**Wheelchair:** A with attendant

### 1140 x 1400

Self supporting structure with telescopic doors. <sup>1)</sup>



Masonry shaft with telescopic doors. <sup>1)</sup>



**Cabin size:** 1140 x 1400 mm  
**Rated load:** 400 kg  
**Wheelchair:** A or B with attendant

<sup>1)</sup> Shaft dimensions with 2-panel doors.

# LIFT COLOUR

Aritco PublicLift Cabin can be painted in any RAL colour from the K7 classic chart (except for pearl and fluoridating colours\*).

Aritco PublicLift Cabin is painted in Window Grey (RAL 7040) as standard. The entire lift can be ordered in another colour as an option. It is also possible to order only the doors or walls in a different colour.



**Standard:**

Whole lift painted in standard colour Window Grey (RAL 7040).



**Full colour option:**

Whole lift painted in optional colour (Incl. shaft, doors).



**Lift partially painted in different colours:**

- Lift walls/Shaft in one colour.
- All doors in one colour.
- One of the above choices or a combination of them.



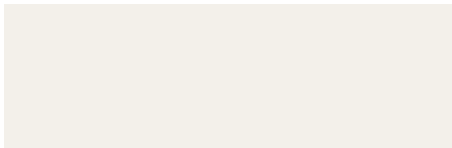
**Standard colour:**



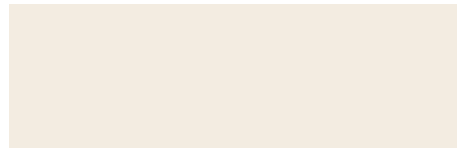
Window Grey  
RAL 7040

Note that the actual colour of the lift may differ from the colour samples pictured.

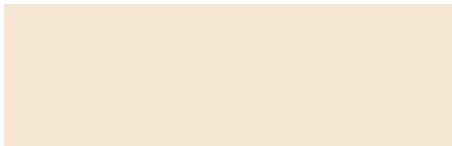
**Other common colours from the RAL chart K7 classic:**



Signal white  
RAL 9003



Pure white  
RAL 9010



Oyster White  
RAL 1013



Light ivory  
RAL 1015



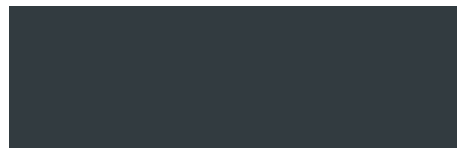
Telegrey 1  
RAL 7045



Traffic red  
RAL 3020



Pearl Dark Grey  
RAL 9023



Anthracite grey  
RAL 7016



Basalt grey  
RAL 7012



Jet black  
RAL 9005

\* Any RAL colour means in this case any RAL colour from the 213 colour RAL chart K7 classic except the following colours that are not available;  
Fluoridating colours: RAL 1026, 2005, 2007, 3024, 3026, 6038  
Pearl Colours: RAL 1035, 1036, 2013, 3032, 3033, 4011, 4012, 5025, 5026, 6035, 6036, 7048, 8029, 9022

# CABIN

The height of the cabin (floor to ceiling) is 2000 mm as standard. 2100 mm and 2200 mm are available as an option.

## Infrared Sensors

Infrared safety sensors around the cabin doorway sense blockages in doorway and prevent trapping. Included as standard.

## Console

The programming console is used to configure the parameters and display the alarms through a display and 4 navigation push-buttons (Enter, Esc, Up, Down). A mobile console is also provided, which can be connected to any Aritco PublicLift Cabin card (CPU, cabin, floors), and which allows to perform the same functions as the fixed console and the movement of the machine during maintenance.

- Status of the lift
- Software configuration, updates
- Configuration for floor
- iButton configuration
- Voice announcer configuration
- Working and maintenance hour count
- Audible warning and alarm configuration
- Optional functions
- Door configurations
- Overload sensor configuration

## Warning and obligation plates

- Identification plate indicating the allowable rated load
- Identification plate indicating "no climbing on the roof"
- Identification plate indicating the person allowed to the use
- Identification plate with main use instructions
- Identification plate for manual operation
- Plate indicating how to behave in the event of recovering the passenger
- Plate warning you to switch off the machine only when on ground floor
- Plate stating the obligation to apply the mechanical block in the pit before entering the shaft for maintenance

## Cabin ceiling

Standard material is Satin (when ordering the machine side wall in stainless steel or scratch resistant steel the ceiling will come in the same material). As an option the ceiling Starry sky can be ordered. This ceiling is only available in Satin.

## Cabin landing indicator

A 7" LCD display on the cabin controls which shows the current floor and travel direction during travel. Included as standard. The LCD display will also show any error codes on the circuit that is broken.

## Voice Announcer

An audible announcer notifying the user of the landing, direction of travel, and doors opening/closing. (option)

## Destination panel

The destination panel is placed on the machine side (D-side) of the cabin.

## "I-Button" Access Control

Always located in the center of the cabin control panel. An electronic system offering fully programmable access to the lift and levels. Same I-Button feature is optional on floor door control.

## Mirror

As an option it is possible to order a mirror on the A, B or C side. This will help a wheelchair user who can't turn around to observe obstacles behind them when moving backwards out of the cabin.

## Handrail

Stainless steel handrail installed on cabin wall for comfort and stability during travel. (option)





### Cabin colour

Different wall laminates to choose from. Satin is standard. (Plastic laminate in brushed stainless steel look a like)



### Flooring

10 different floorings to choose from. See page 13.

# DESTINATION PANEL

The destination panel is always placed on the machine side (D-side) of the cabin.

It contains the destination buttons, alarm button, autodialer (option), landing indicator, door "re-open" buttons, Aritco logo, max weight and number of persons allowed. The Destination panel is made in Satins as standard. Stainless steel and Scratch resistant steel is an option.

## Destination buttons

Destination buttons are according to EN81-70 and EN81-41 for increased accessibility. The locations of the buttons are within the limits in the standard, i.e. height between cabin floor and the center line of the buttons is within 1000-1200 mm.

30Ø braille and tactile round buttons with blue backlight illumination on cabin control panel. Signs and braille are embossing (brightened). Height of signs is 15 mm. The button comes with a background lit frame which indicates if the destination button is pressed. Following buttons are available: 0, 1, 2, 3, 4.

## "Re-open button"

"Re-open button" according to EN81-70 is included as standard.

Re-open button: identified by the symbol < I >

## Alarm button

An audible alarm sounds when the alarm button is pressed from the cabin control panel. Pressing the alarm activates the autodialler.



# FLOOR

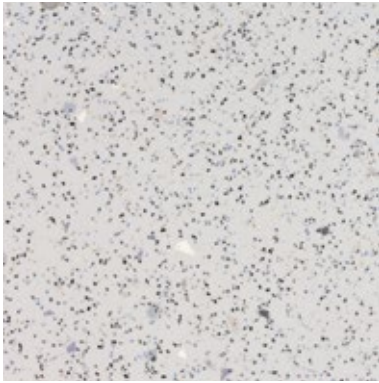
Choose between the following options for vinyl or rubber flooring.

It is also possible to order the lift without a floor, which enables you to put in your own flooring alternative. The flooring at dealers care is regulated so that your flooring can not be thicker than <20mm and below 20kg/m<sup>2</sup>.

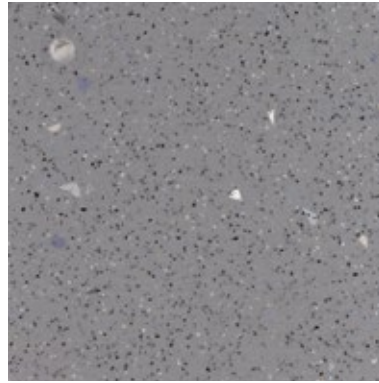


## Dealers care

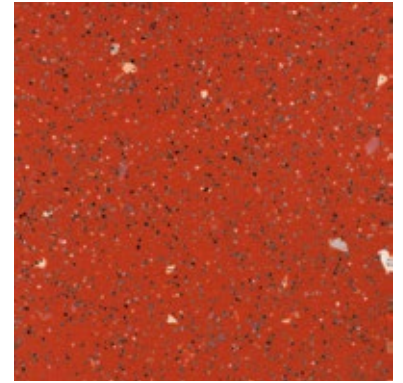
Maximum thickness of 20 mm and weight not more than 20kg/m<sup>2</sup>.



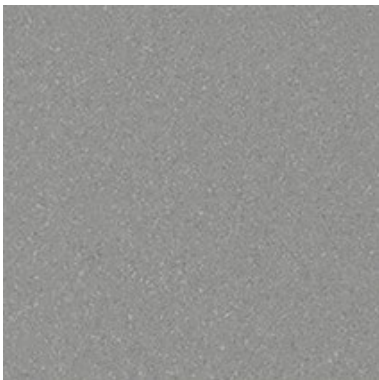
**Light grey, Safestep**  
Standard



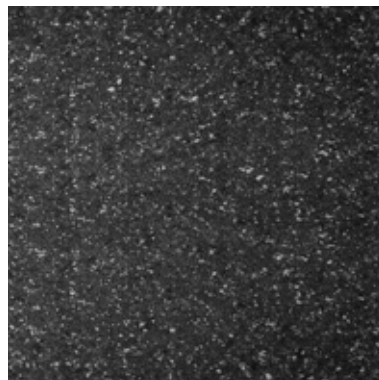
**Dark grey, Safestep**  
Standard



**Red, Safestep**  
Standard



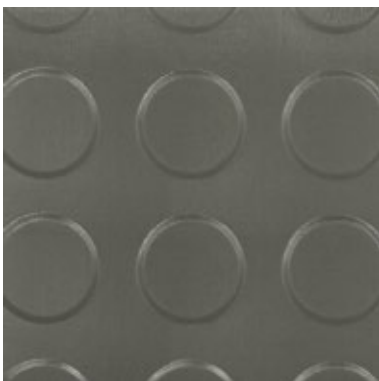
**Beige Vinyl**  
Option



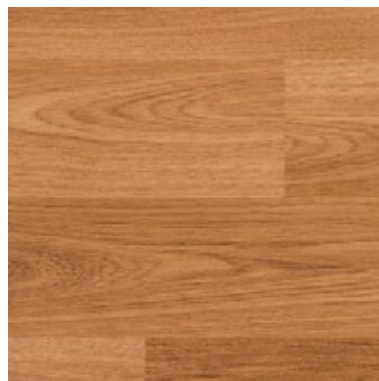
**Grey Vinyl**  
Option



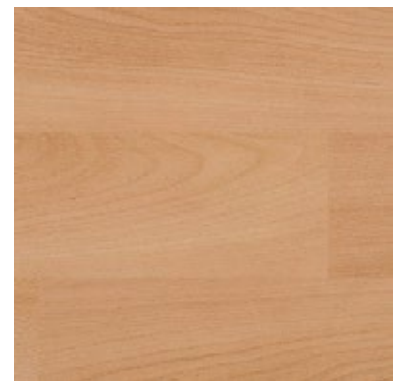
**Sand Vinyl**  
Option



**Checker Stud Grey, Rubber**  
Option



**European Oak Vinyl**  
Option



**Classic Beech Vinyl**  
Option

# DOORS

The landing doors installed at each landing are fully automatic telescopic sliding doors.

## 2 Speed Telescopic Door - Standard

A double layered automatic telescopic landing door. Satin is standard.

## 3 Speed Telescopic Door - Option

A triple layered automatic telescopic landing door. On a smaller cabin size, this allows a wider opening.

## 4 Speed Telescopic Door - Option

A 2x2 layer telescopic door with central opening. Available on the longest side of the lift only (B-side).

## Fire Rated Door - Option

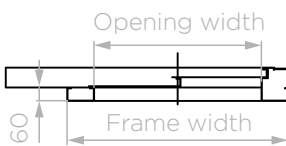
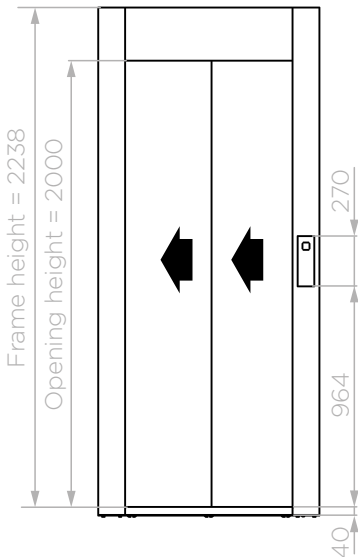
Option for fire rating of doors to either 1 hour fire rated E60, or 2 hour smoke and fire protection EI120.

Opening width	Frame width
800 mm	1040 mm
900 mm	1140 mm

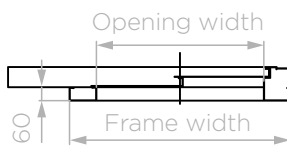
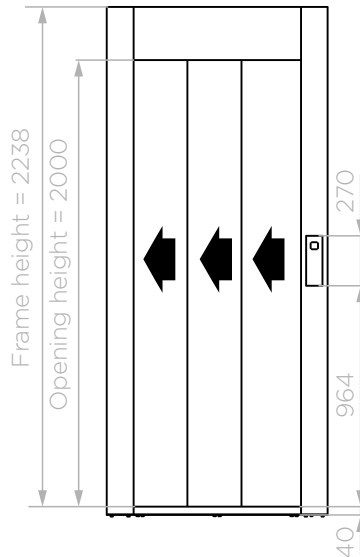
Opening height	Frame height
2000 mm standard	2238 mm
2100 mm	2338 mm
2200 mm	2438 mm

## Door material

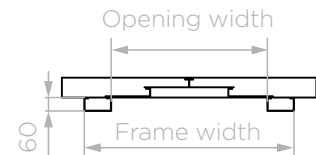
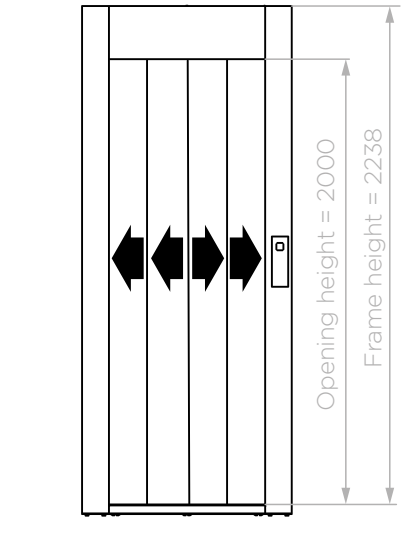
- Satin (plastic laminate stainless steel) standard
- Stainless steel
- Optional RAL
- Glass (only available on door height 2000mm and 2100mm)



2-Speed Telescopic door (T2)



3-Speed Telescopic door (T3)



4-Speed Telescopic door (C4)

(mm)

# DOOR CONTROL

The door control is placed on the door frame of each landing door.

## Landing Floor Indicator

An LCD display showing which floor the lift is currently positioned at, with call accepted function. Located on the external landing control panel at each floor.

## I-button information

Optional

## Call button

The call button comes with a background lit frame which indicates the status of the lift.

- Green light indicates that the lift is free and ready to use.
- Red light indicates that the lift is occupied. It is busy and you can't call for it.
- Red flashing light indicates that the machine is called for.



# LIFT WALLS

The lift can be delivered with or without a self supporting structure for indoor and outdoor installations. The shaft has corrosion class C5.

## Machine side cladding

The lift always come with machine side cladding in steel panels as standard or glass as an option. The first panel is always a ventilation panel in steel. The panels are painted in the same colour as the shaft.

## Shaft panels

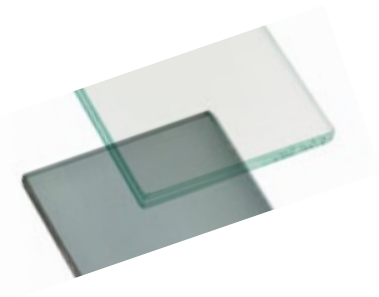
Shaft Panels in steel is an option. The standard color when choosing shaft panels in steel are grey RAL 7040. You can also choose other colors from the RAL Classic K7 chart.

## Glass

Glass panels in clear glass is standard and tinted glass is available as an option.

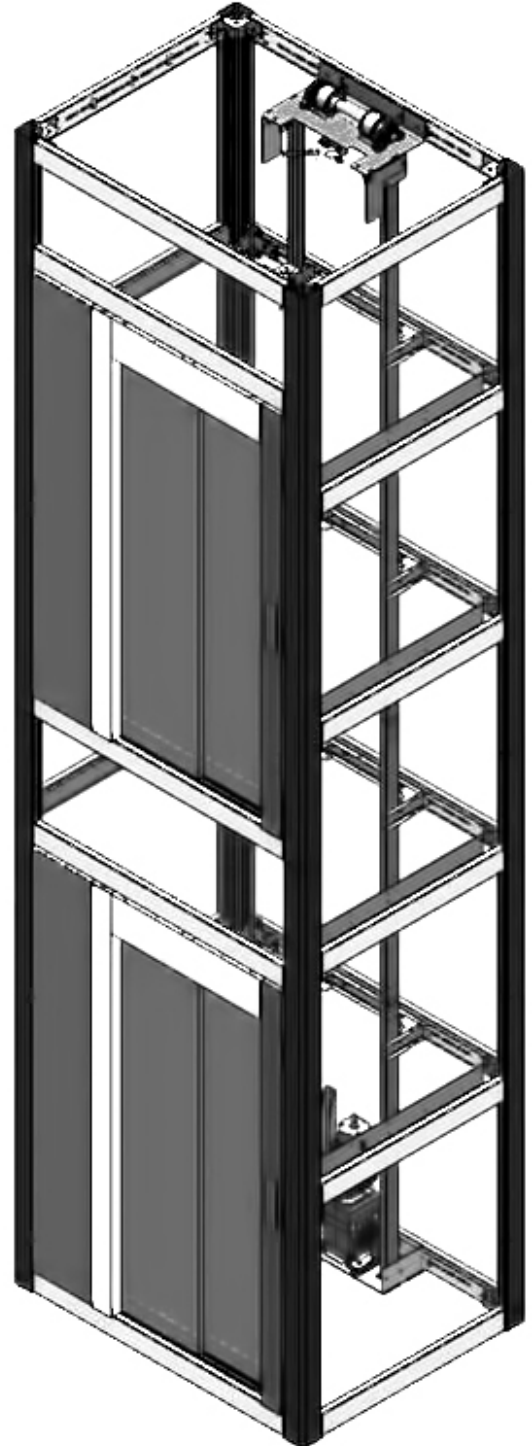
Clear glass

Tinted glass



## Outdoor version

The outdoor version of the Aritco PublicLift Cabin is adapted to an outdoor environment. The shaft is delivered with corrosion class C5. There are various options that enable outdoor installation even in a Nordic climate. For more information, please contact Aritco or your nearest dealer.





# COMMUNICATION

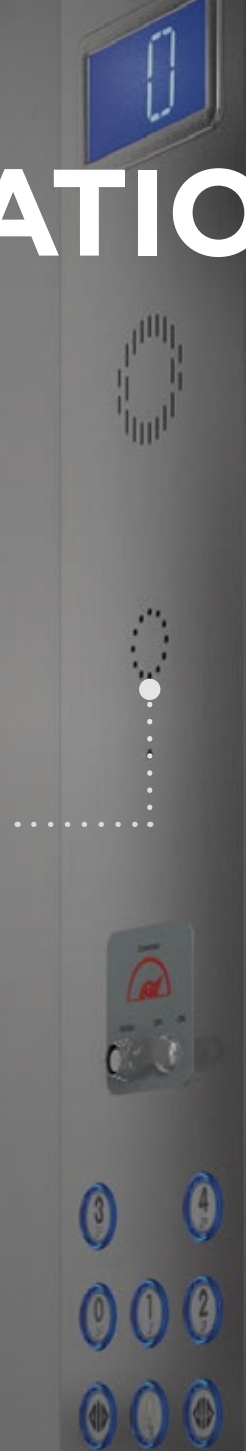
Two way communication is mandatory according to EN81-41.

## Autodialer

Equipment for emergency calls. Integrated on the destination panel. Dials automatically when the alarm button is pressed. When unanswered after a predefined time, the call is automatically forwarded to the next number.

The autodialer can be equipped with a GSM module (2G). Aritco does not supply SIM card.

- Autodialer fixed network / PSTN
- Autodialer with GSM module
- Telephone at dealers care



# DRIVE SYSTEM

## Power supply

The Aritco PublicLift Cabin is always delivered with a 1-Phase 230V frequency control.

## Soft start and stop

It provides a smoother start when pressing a destination button. Included as standard.

## Electric emergency operation (Battery 36-Volt)

In case of power failure or main inverter block during the platform operation, it is possible to reach the lower floor and get off the platform. This is immediately recognizable as the machine stops, lights are weaker and only the down buttons remain active. The only possible operation is to press the push button to reach the lower floors; this operation is performed at lower speed and the door opens regularly when the door is reached. Executed when pressing a floor button. Can also be run externally from the service box.

## Motor

Power: 3kW

Main voltage: 230-mono AC - 50Hz

Motor voltage: 230 V +/- 5%

Auxiliary voltage: 240 DC

## Control system

Micro-controller-based control system.

System Bus: Controller Area Network (CAN) @ 125 kbit / s.

The system is based on a CAN bus multi-node architecture.



---

# EUROPEAN STANDARDS AND SAFETY

Aritco PublicLift Cabin comply with the Machine Directive 2006/42/EC, by following the harmonized standard EN 81-41. The lifts are also compliant with the Electromagnetic compatibility (EMC) – 2004 and Low voltage Directive 2006/95/EC. The lifts are type approved, CE marked. E60 or EI120 – Fire & smoke proof door complies with the lift directive 95/16/EC and EN 81-58. A certificate for respective lift is available on Aritco Cloud.

---



# RECOMMENDED SALES ARGUMENTS

## **Low operation and maintenance cost**

Among the lowest on the market.

## **No hydraulics, which mean no leakage or smell**

No additional space needed for hydraulic unit.

## **Minimum builders work and small footprint**

The lift can be installed with a 120 mm pit when delivered without shaft and 140 mm pit when delivered with shaft. For lifts with shaft you have an option to install the lift

without pit, and with a ramp instead. All parts are included in the shaft - no extra machine room or head room needed.

## **Robust shaft**

Robust and resistant to damage. Good noise and acoustical isolation. Corrosion class C5. Eurocode 3 compliant.

## **You can always get out of the lift by yourself**

If there is a power failure, you can always get out of the lift by yourself with

battery operated emergency lowering. Use the platform buttons and the lift will take you to the closest lower floor and you can open the door and get out by yourself.

## **Lights**

During the platform use lights automatically switch on, they also turn off automatically when the platform is at a floor and not used for a period of time equal of 2 minutes.

Aritco is a worldleading manufacturer  
of platform lifts and home lifts. Read  
more at **aritco.com**

Follow Us!

