

EMERGENCY RELEASE
POINT (BOTH DOORS)

PREFERRED
POSITION OF
LOCKABLE
ISOLATOR -
WITHIN 2mtrs OF
ELECTRICAL
CABINET

NOMINAL TO F.F.L.=2000

MINIMUM
STRUCTURAL WIDTH
OPENING 1305

ELECTRICAL CABINET &
ACCESS TO EMERGENCY
LOWERING FACILITY.
INTEGRAL TO SHAFT
ENCLOSURE

PLATFORM
CONTROL PANEL

HEIGHT OF PUSH
BUTTONS=900

NO INSULATION OR SCREED IN FLOOR
CONSTRUCTION UNDER SHAFT

MINIMUM STRUCTURAL
WIDTH OPENING 1430

MIN TOP HEIGHT=2240
(SHAFT MAY BE
EXTENDED TO SUIT)

TRAVEL

PIT=50
+10
-0

VIEW A

VIEW B

VIEW C

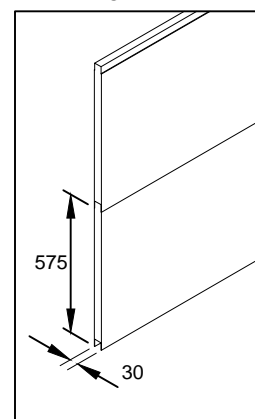
POWDER COATED STEEL /
EPS / STEEL SANDWICH
PANELING

PRINCIPAL DATA:

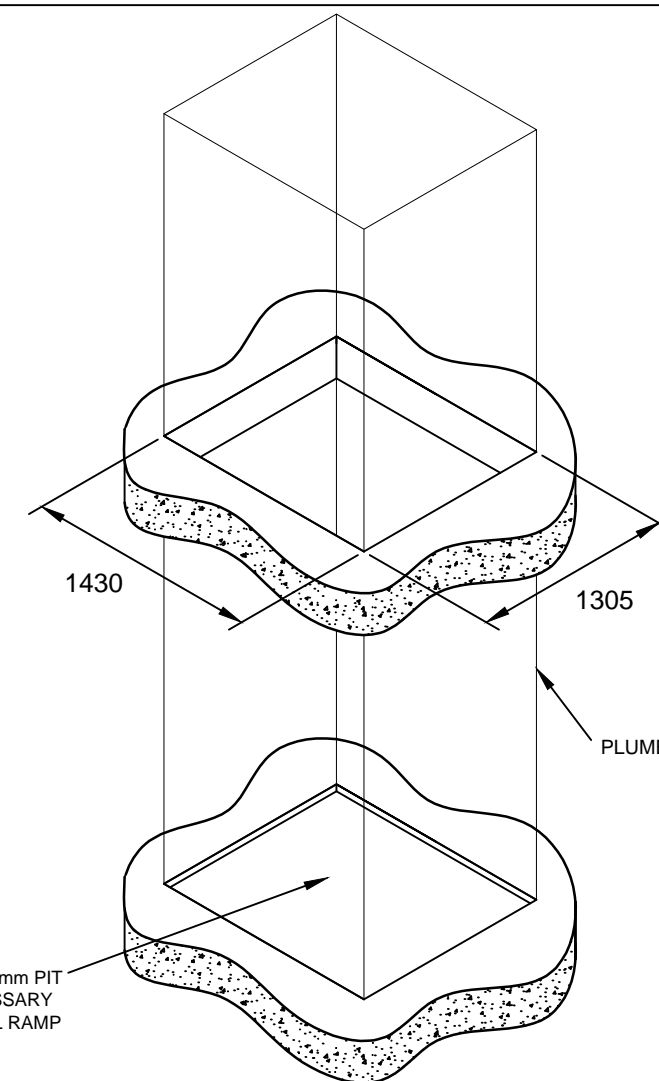
TYPE:
ARITCO PUBLICLIFT ACCESS / HOMELIFT ACCESS
DRIVE SYSTEM:
STATIC SCREW WITH ROTATING NUT
CAPACITY:
410KG OR 500KG
TRAVEL:
VARIABLE (UP TO A MAXIMUM OF 9000)
NO OF STOPS:
2 SHOWN (UP TO A MAXIMUM OF 6 AVAILABLE)
SUPPLY VOLTAGE:
230V 31PH 50HZ (3 PHASE AVAILABLE)
RUNNING CURRENT:
4.7AMP
STARTING CURRENT:
18AMP
STANDARD COLOUR:
RAL 9016 WHITE
(OTHER RAL COLOURS AVAILABLE)

DOOR DATA:

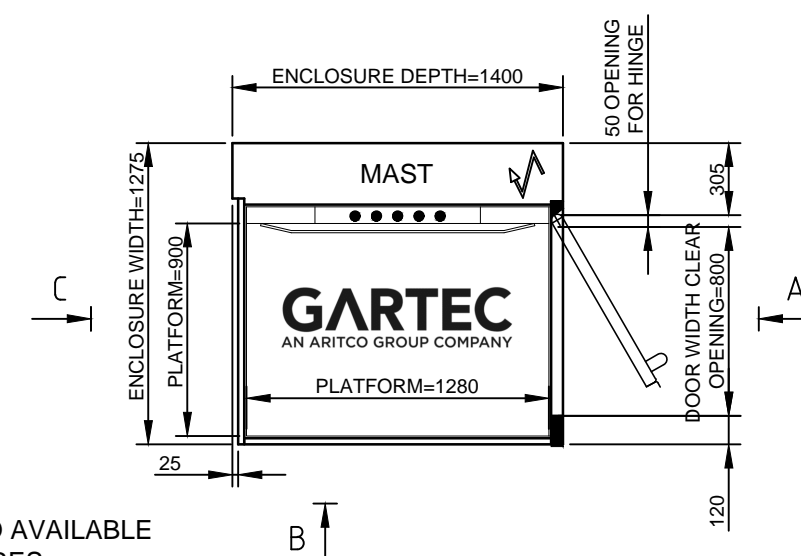
TYPE:
GL TYPE SHOWN (ALTERNATIVES AVAILABLE)
NO OF DOORS:
2 SHOWN (UP TO A MAXIMUM OF 6 AVAILABLE)
FIRE RATING:
AVAILABLE (NOT SHOWN)
OPENING SIZE:
800 X 2000MM
DOOR FRAME:
INTEGRAL TO SHAFT ENCLOSURE
DOOR/FRAME COLOUR:
WHITE POWDER COATED RAL 9016
DOOR GLASS:
VARIABLE
CLOSER:
MANUAL TYPE SHOWN
(AUTOMATIC VERSION AVAILABLE)
FURNITURE:
FITTINGS IN ANODISED ALUMINIUM



NOT TO BE USED FOR CONSTRUCTION - INDICATION
PURPOSES ONLY - REFER TO SITE SPECIFIC DRAWING



APERTURE & PIT REQUIREMENTS



3, 4, 5 AND 6 STOP LIFTS ALSO AVAILABLE
MAXIMUM TRAVEL OF 13 METRES

GARTEC PUBLICLIFT ACCESS / HOMELIFT ACCESS: 900 PLATFORM x 1280, 2 STOP, LIFT ENTRY/EXIT SAME SHORT SIDE, 800 DOORS

GARTEC

AN ARITCO GROUP COMPANY

Tel: +44 (0) 1296 397 100 Fax: +44 (0) 1296 397 600
email: sales@gartec.com www:gartec.com

Midshires Business Park
Smeaton Close
Aylesbury
Bucks
HP19 8HL

Drawn by
S.H.

Scale
NTS

Date
16/02/21

Drawing No.
SALES-306

Issue
8