

EMERGENCY
RELEASE POINT
(BOTH DOORS)

PREFERRED
POSITION OF
LOCKABLE
ISOLATOR -
WITHIN 2mtrs OF
ELECTRICAL
CABINET

NOMINAL TO F.F.L.=2000

ELECTRICAL CABINET &
ACCESS TO EMERGENCY
LOWERING FACILITY.
INTEGRAL TO SHAFT
ENCLOSURE

PLATFORM
CONTROL PANEL

HEIGHT OF PUSH
BUTTON=900

NO INSULATION OR SCREED IN FLOOR
CONSTRUCTION UNDER SHAFT

VIEW B

POWDER COATED STEEL /
EPS / STEEL SANDWICH
PANELLING

MIN TOP HEIGHT=2240
(SHAFT MAY BE
EXTENDED TO SUIT)

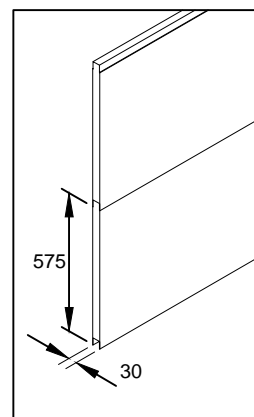
TRAVEL

TYP. STRUCTURAL OPENING=2150
HEIGHT OF CALL
BUTTONS=1025

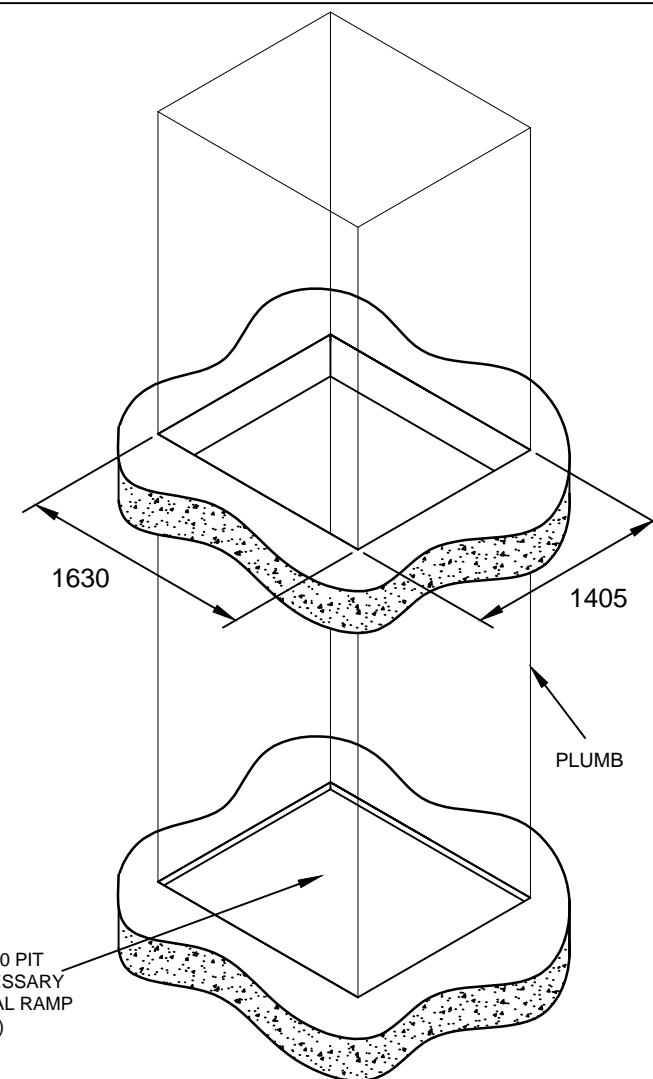
VIEW C

SHAFT HEIGHT

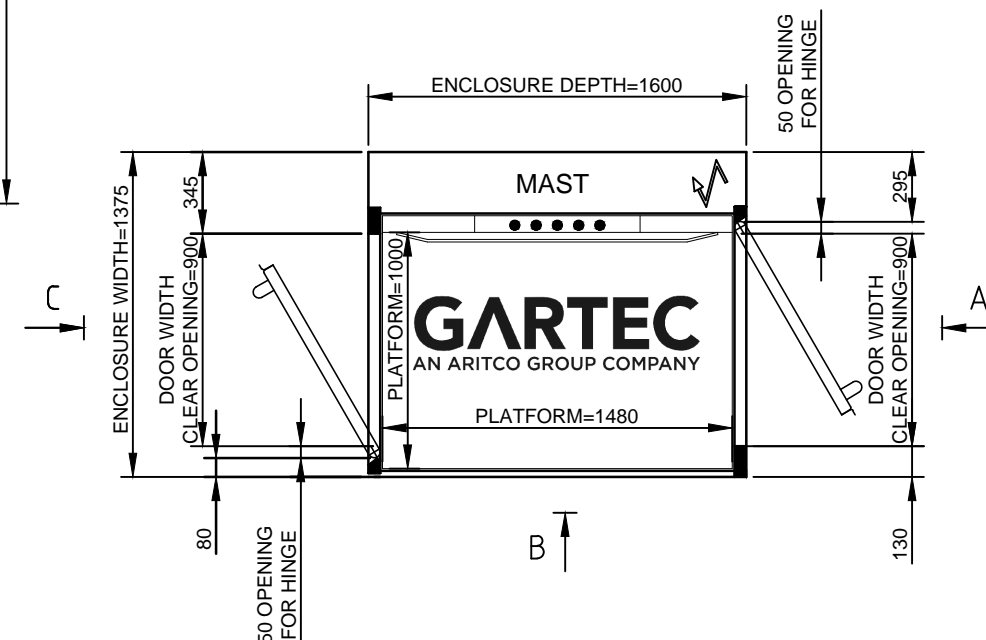
DOOR FRAME=2240



NOT TO BE USED FOR CONSTRUCTION - INDICATION
PURPOSES ONLY - REFER TO SITE SPECIFIC DRAWING



APERTURE & PIT REQUIREMENTS



PRINCIPAL DATA:

TYPE:
ARITCO PUBLICLIFT ACCESS / HOMELIFT ACCESS
DRIVE SYSTEM:
STATIC SCREW WITH ROTATING NUT
CAPACITY:
410KG OR 500KG
TRAVEL:
VARIABLE
NO OF STOPS:
2 SHOWN (UP TO A MAXIMUM OF 6 AVAILABLE)
SUPPLY VOLTAGE:
230V 1PH 50HZ (3 PHASE AVAILABLE)
RUNNING CURRENT:
4.7AMP
STARTING CURRENT:
18AMP
STANDARD COLOUR:
RAL 9016 WHITE
(OTHER RAL COLOURS AVAILABLE)

DOOR DATA:

TYPE:
GL TYPE SHOWN (ALTERNATIVES AVAILABLE)
NO OF DOORS:
2 SHOWN (UP TO A MAXIMUM OF 6 AVAILABLE)
FIRE RATING:
AVAILABLE (NOT SHOWN)
OPENING SIZE:
900 X 2000MM
DOOR FRAME:
INTEGRAL TO SHAFT ENCLOSURE
DOOR/FRAME COLOUR:
WHITE POWDER COATED RAL 9016
DOOR GLASS:
VARIABLE
CLOSER:
MANUAL TYPE SHOWN
(AUTOMATIC VERSION AVAILABLE)
FURNITURE:
FITTINGS IN ANODISED ALUMINIUM

GARTEC PUBLICLIFT ACCESS / HOMELIFT ACCESS: 1000 PLATFORM, 2 STOP LIFT, THROUGH CAR, WITH GLASS

GARTEC

AN ARITCO GROUP COMPANY

Tel: +44 (0) 1296 397 100 Fax: +44 (0) 1296 397 600
email: sales@gartec.com www:gartec.com

Midshires Business Park
Smeaton Close
Aylesbury
Bucks
HP19 8HL

Drawn by
S.H.

Scale
NTS

Date
16/02/21

Drawing No.

SALES-103

Issue
8