

DO NOT SCALE

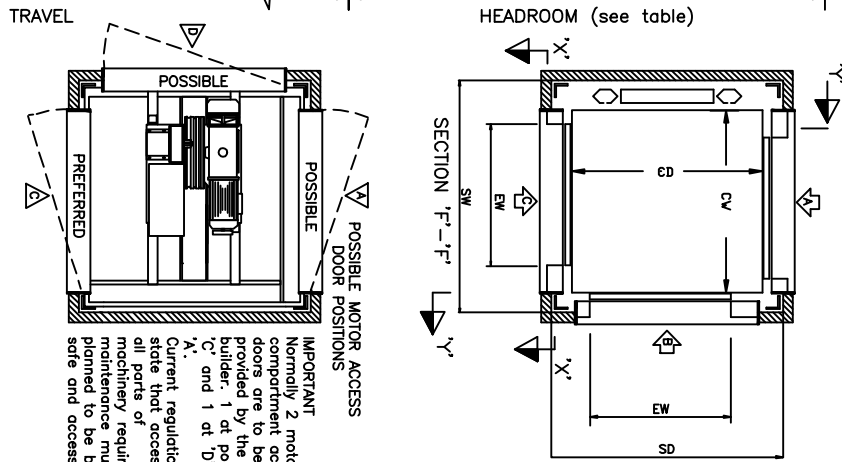
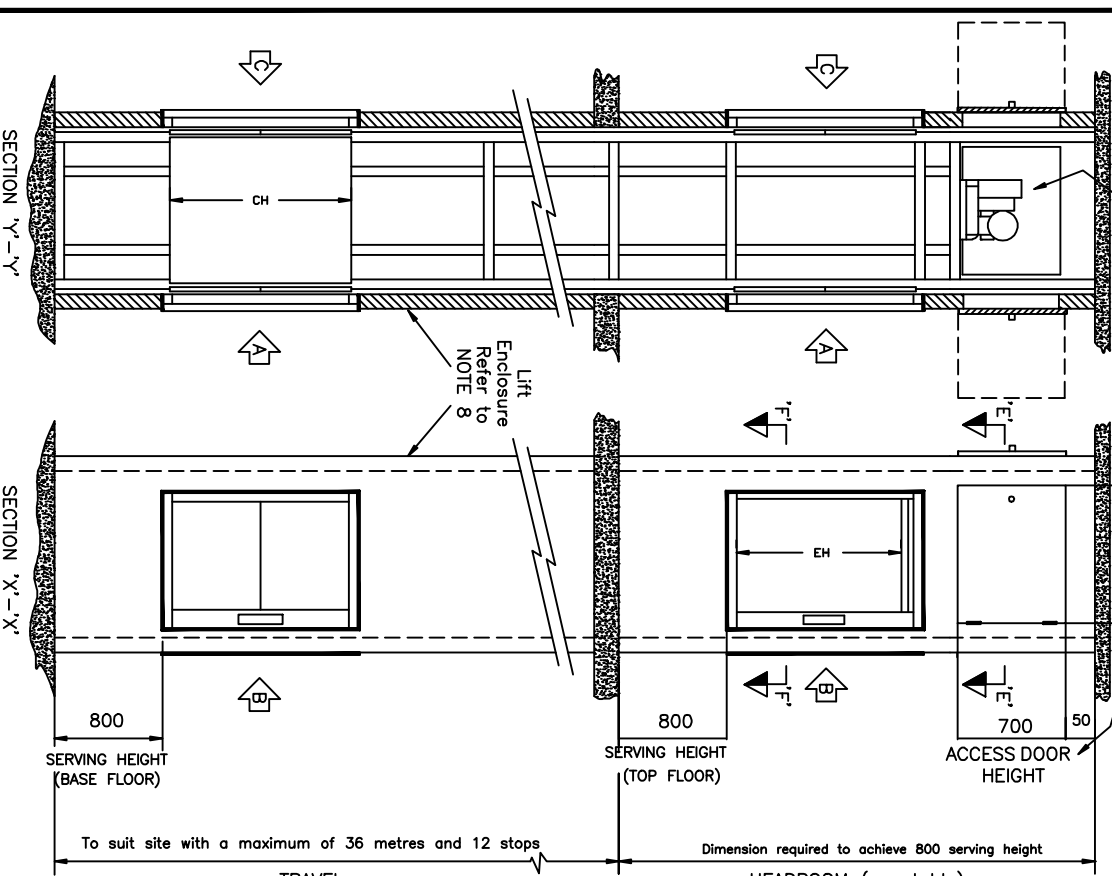
ALL DIMS IN MM

Safe access to motor compartment must be provided

IMPORTANT contact us to discuss motor access positions if unsure

IF IN DOUBT - ASK

ENTRANCE ARRANGEMENTS AVAILABLE



This information relates to standard Microlift models held in stock. There are a variety of other sizes available - please contact us to discuss. We offer a number of optional extras such as heated car, heated shelf and a intercom system. Two finishes are available either grey baked painted (RAL7036) or stainless steel (Aisi 304-Grade 320). We would be happy to provide you with a no obligation written quotation upon request.

Model	Load	Car CW	CD	CH	SW	SD	EW	EH	Entrance Height	Serving Height	Headroom
CC50	50 kg	510	320	800	725	520	320*	770	800	2600	2600
50A	50 kg	515	420	800	820	640	420*	770	800	2600	2600
50B	50 kg	520	520	800	800	800	420	770	800	2600	2600
50C	50 kg	620	620	800	900	900	520	770	800	2600	2600
100A	100 kg	720	720	1000	1000	1000	620	970	800	2800	2800
100B	100 kg	820	820	1200	1100	1100	720	1170	800	3000	3000

Denotes entrance positions available (up to 3 per floor), except entrance position B is not available on DD50 model. NOTE: The entrance width of the 50A B entrance reduces to 320mm.

BUILDER'S WORK

- Before installation**
- Form trimmed aperture through floor to relevant shaft size above. If more than two floors are to be served, each aperture must be plumb and in line, one above the other.
 - Ensure the base on which the lift will stand is firm, flat and capable of withstanding the forces imposed on it by the lift equipment and its load. These loads vary according to model, number of floors served and travel dimensions. IMPORTANT! If an accessible void (ie lower level, car park, pavement, road etc) exists below the base of the lift shaft you MUST contact us for guidance.
 - Make provisions to enable safe access to the motor compartment to include hinged lockable access door(s) the doors must swing outwards away from the lift shaft so please plan the area in front of the lift shaft to preclude any services etc that may have to run by this area
 - Provide a permanent 3-phase 15amp triple pole switched isolator OR a 1-phase 13amp single pole and neutral fused and switched isolator capable of being locked in the OFF position. Position isolator adjacent to (not in) the lift shaft at the top floor served 2m above FFL. Electrical details are given below.
 - Provide a 1-phase 13 amp switched socket for lighting in the motor compartment.
 - Additional dedicated 1-phase 10amp power supplies will be required if optional extras are ordered, eg intercom system, car heater or heated shelf.
 - Services other than those required for the operation of the Microlift MUST NOT be sited in or pass through the lift shaft.
- If any part of the lift shaft needs to be built before installation of the lift equipment, please ensure that the lift shaft is not obstructed by us to discuss further.

- After installation**
- Completely enclose the lift to comply with current fire and safety regulations, ensuring there are no gaps which could become finger traps. Please note: Do not allow ingress of rubble, dust, cement etc into the lift shaft.

- Provide safe access to the motor compartment (usually above top floor lift entrance on 'C' face) by means of hinged and lockable doors each 700 mm wide x 700 mm high. Please note that screwed panels do not meet current safety regulations.
- Provide suitable equipment to facilitate safe access to the motor compartment. IF SAFE ACCESS IS NOT PROVIDED WE MAY NOT BE ABLE TO SERVICE THE LIFT EQUIPMENT.

Load	Power	kw/h	hp	amps	start	run
50 kg	1-phase	0.45	0.6	2	2.4	2.4
50 kg	3-phase	0.33	0.45	1.1	1.1	1.1
100 kg	1-phase	0.75	1	3	3	3
100 kg	3-phase	0.66	0.9	2	2	2

Microlift

50/100

SERVICE LIFTS

Title

ARRANGEMENT SHOWN
RISE AND FALL
SHUTTERS WITH
SERVING HEIGHT

INNOVATE LIFTING SYSTEMS

The Southborough Centre
Warehouse No1, Draper Street
Southborough, Tunbridge Wells
TEL: 01892 557530
FAX: 01892 557531

FOR GUIDANCE ONLY - do not use for construction purposes

Data Sheet No
GA ML 0022

Issue No
2

Date

23rd March 2006

www.stannah.com/goodlifts

IF ACCESSIBLE SPACE EXISTS BELOW LIFT BASE PLEASE SEE NOTE 2 OF BUILDER'S WORK